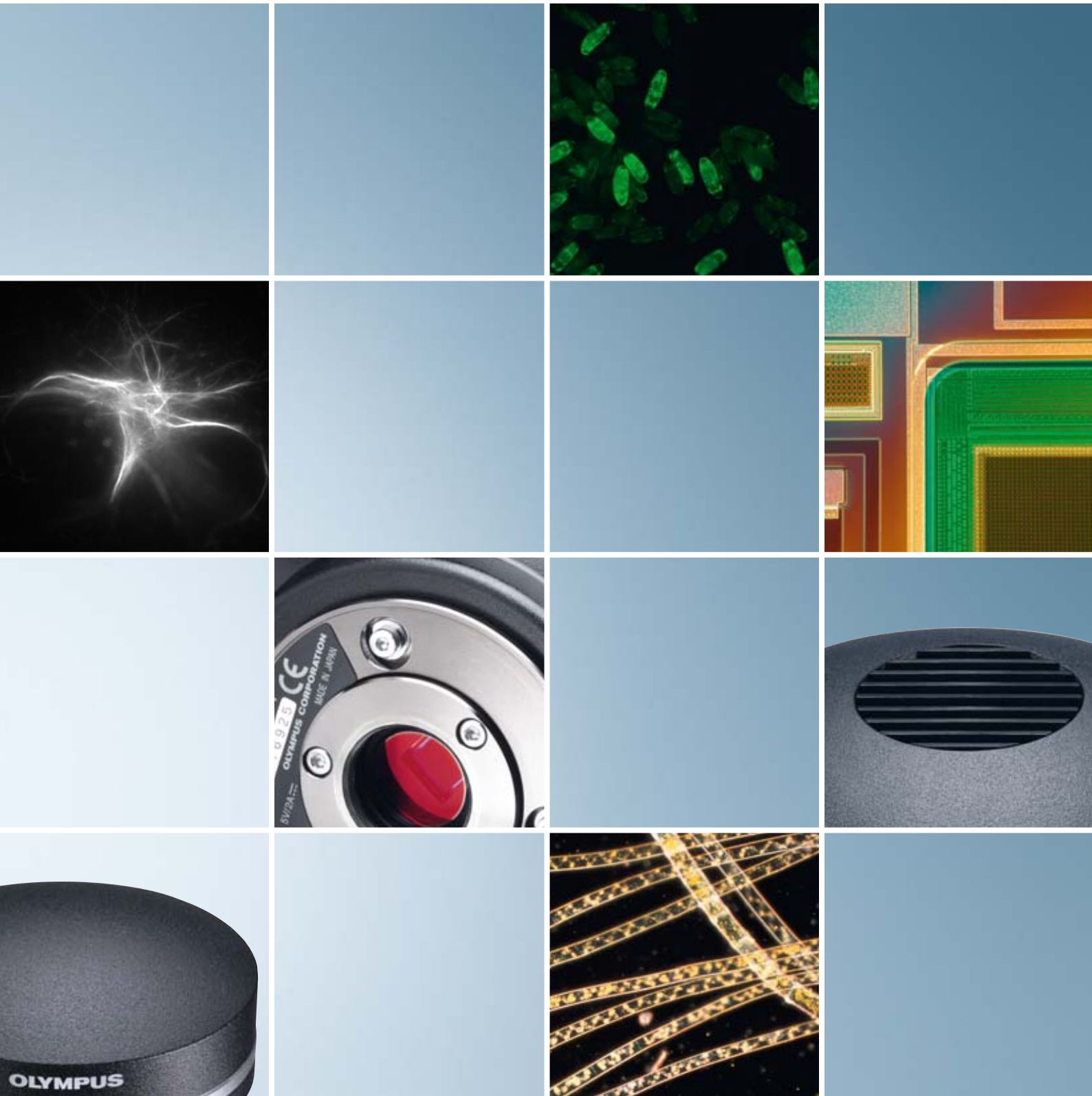


Versatility by Design





THE FLEXIBILITY OF CHOICE

Your project needs the right camera

It is always preferable to have a choice, and this is definitely true when it comes to matching your digital imaging requirements with your project work. Sometimes you'll want dazzling colour fidelity and at other times you'll need pixel-precise black and white capture. There are also those occasions when you would like a microscope camera that can do both. Add to this selection the ability to choose from a range of image sizes and resolutions, and the Olympus digital microscope camera range really does offer you the flexibility of choice.



Perfect colour match

4-13

Stay true to the colours: colour fidelity has been the unreachable zenith of digital microscope cameras until now – the Olympus colour camera range provides colour match and resolution capabilities for every application.



The right 'black and white'

14-17

It's all about sensitivity: capturing the smallest intensity differences in every single pixel to build up the perfect picture of the fluorescent scene on the slide.



Multi-talented all-rounders

18-22

The best of both worlds: the versatility to image using both colour and B&W, providing a dependable workhorse for all imaging procedures.



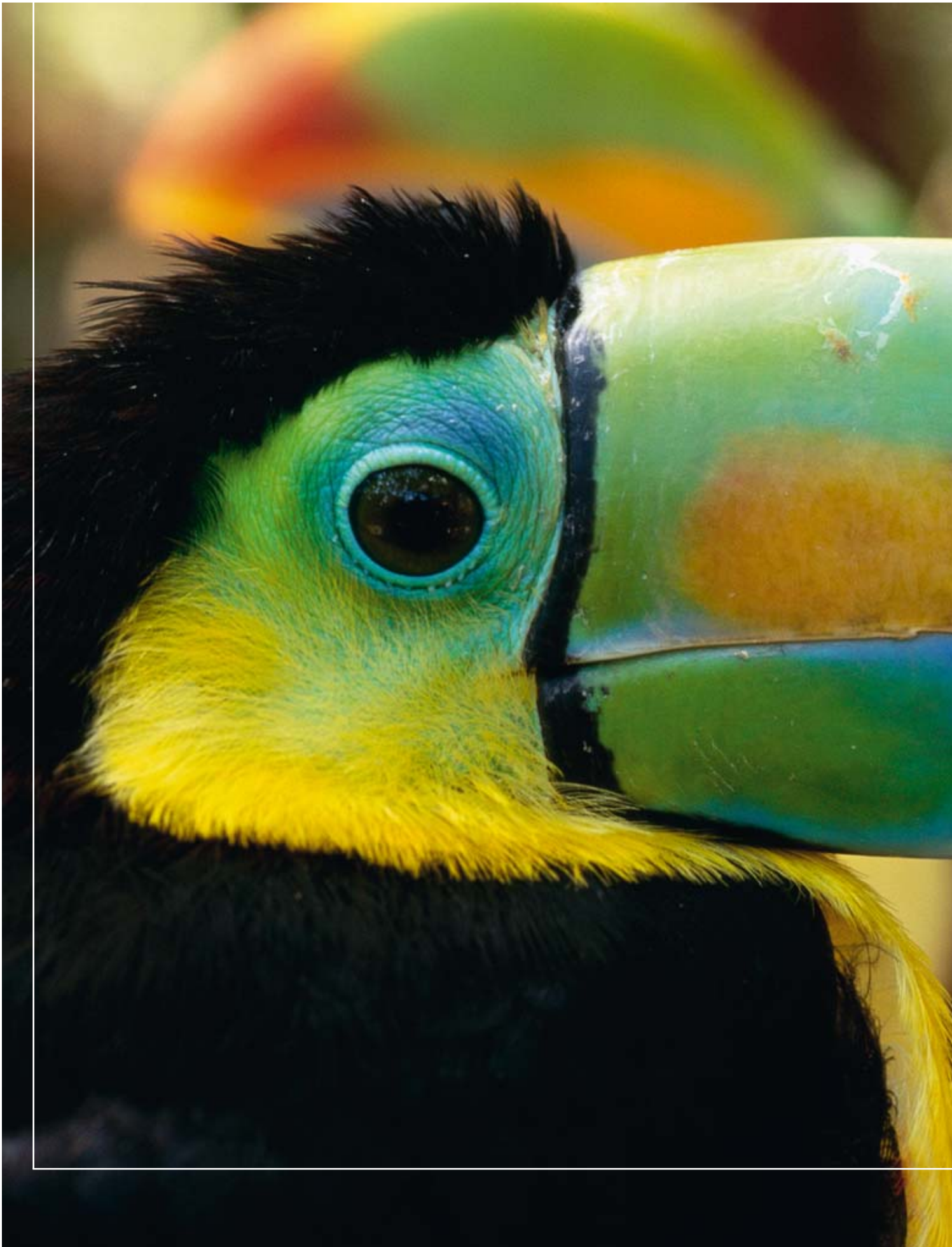
Staying in the shade

23

The colours present in a sample are essential indicators of differences between components. Ensuring accurate reproduction and recording of these colours is therefore of the utmost importance. The Olympus True Colour system has been developed to do just this, enabling consistency between input and output colours.

Your vision: our future

Olympus is dedicated to making digital imaging solutions to support your work at all levels. We have therefore developed a comprehensive range of digital cameras to make the most of any application, whatever the microscope.



PERFECT COLOUR MATCH

Colour: an exact science

Colour reproduction presents microscope camera manufacturers with a very complex set of issues. Besides the colour itself, the intensity and weighting within the given spectral range has to be taken into account, and Olympus has worked very hard to produce a range of cameras that provide perfectly balanced solutions for each and every application.

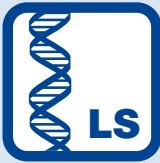


A DP21

Fast, high-resolution camera with stand-alone functionality

**B** Versatile camera

For life and materials science

**C** Authentic colours

Internal colour management



DP21

This easy-to-use, stand-alone digital camera is designed to output the full 2-megapixel image at a real-time rate of 15 frames per second (fps) directly to a 1,600 x 1,200 Widescreen Ultra eXtended Graphics Array (WUXGA), high-definition monitor (not included).

The Olympus DP21 digital camera is ideal for a broad range of clinical, diagnostic and educational applications with its rapid, real-time live display, stunning colour and crisp detail. Pathologists, cytologists, haematologists and microbiologists are sure to be very impressed by the accurate colour reproduction of their specimens. The intuitive control panel can be extended with a PC mouse and keyboard to ensure easy and accurate control of the various measurement and annotation functions. Furthermore, images can be stored directly on USB flash media or even transferred via a LAN connection to any storage point on your network.

Broad range of applications

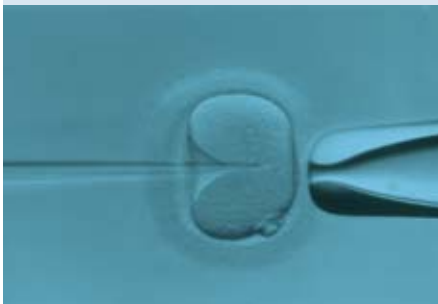
The DP21 is ideal for a broad range of biomedical, clinical, diagnostic and educational applications with its rapid, real-time live display, stunning colour and crisp detail. It is also ideal for a wide range of end-users who require a camera for documentation purposes such as for bright fluorescence or inspections of electronic parts and industrial materials. The stand-alone functionality means that the camera does not require any connections to a PC, ensuring excellent flexibility in terms of technology and space requirements.

Presentation and discussion

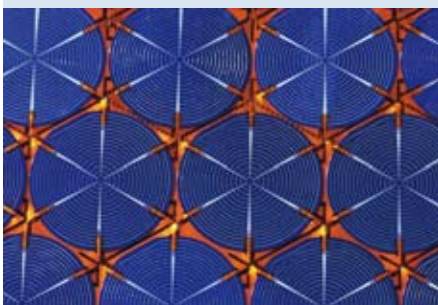
The Olympus DP21 is the perfect image source for the presentation of microscopic images, since it can be directly connected to a large flat screen or projector. As a result it can be used to review and display the finest details of delicate specimens to multiple people simultaneously, or even display images to an entire auditorium during a presentation.

Outstanding colour reproduction

The 2-megapixel DP21 uses a 1,600 x 1,200-pixel CCD and a 12-bit analogue-to-digital converter. This enables it to display subtle colour differences, providing outstanding colour and fine-detail fidelity. As a result, pathologists, cytologists, haematologists and microbiologists will find the accurate colour reproduction of their specimens a welcome change.



In vitro fertilisation



Solar cells: photovoltaic silicon wafer



Stand-alone operation

The DP21 provides complete stand-alone functionality (no PC required), making it ideal when precious bench space is limited. The camera is controlled from an ergonomic, hand-operated control box that provides smooth operation via the intuitive layout of the function keys. Furthermore, a standard PC mouse, keyboard and monitor can be connected via USB/DVI connectors to ensure the easy and precise execution of various on-screen measurement and annotation functions.

The focusing indicator and panning 1x–4x digital zoom function mean that faster and more accurate focusing can be achieved with ease, even at lower magnifications. This, together with a calibrated scale bar and numerous measurement functions, enables maximum flexibility in imaging protocol development.

Storage and network

As a result of the DP21 features, manual imaging is quick and easy, and the camera can even be set to automatically control the exposure and white balance of the image. Furthermore, an over/underexposure indicator ensures images are perfect every time. Images can be stored in different resolutions on the supplied USB 2.0 flash media. In addition, the device can be integrated into your local area network, giving access to the captured images from any workstation within the network.

PC software control

The DP21 camera is also available without the control unit. In this version it can be connected via FireWire™ IEEE 1394a to a PC or laptop running Windows XP or Vista. In this configuration it can be used as a fully integrated component of the Olympus software packages for life science or materials science. Each range presents an array of solutions specially designed to provide flexible and easy-to-use functionality for better image acquisition, processing, analysis, evaluation and report generation.

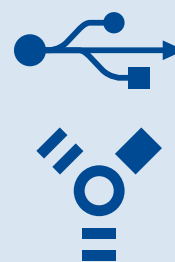
E DP21 hand switch

Enables operation without PC



F USB/DVI/FireWire™ connectors

Easy connection of a standard PC mouse, keyboard and monitor

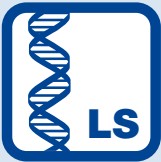


A SC30

Camera head

**B** Brightfield camera

For materials and life science



SC30

The Olympus SC30 uses a 3.3-megapixel CMOS chip which is excellent for standard brightfield applications and is superb for simple digital documentation purposes. In conjunction with its excellent cost-performance ratio, the SC30 is the ideal introductory model for digital image acquisition using light microscopes.

Operational versatility

The SC30 has been designed to give optimum results in a wide range of applications. Its superior colour quality, combined with a live image frame rate of 10 fps at full resolution (2,084 x 1,532), gives the opportunity to create microscope images with great ease. The sensitivity as well as the frame rate of the SC30 can be increased by using various binning modes. This leads to easy observation and focusing, with up to 49 fps in 4x binning. Exposure times can be set from 57 μ s up to 1.75 s. The SC30 ensures excellent colour fidelity.

Easy integration

The SC30 uses the standard C-mount adapter for optical coupling, and data transfer and power requirements are dealt with by a single high-speed USB 2.0 cable. This ensures that both hardware and software integration into any system is easy. The SC30 is fully compatible with the *cell** and Stream software environments.



LED lamp, darkfield image



Cast iron with spherulites, etched

UC30

The Olympus UC30 offers an excellent 3.2-megapixel resolution and fast frame rates with the added benefit of 2x and 3x colour binning, making it ideal for entry-level imaging requirements in both life and materials sciences. The CCD chip provides 2,080 x 1,544 pixels with 14 bits per colour channel and supports a number of different frame rates.

High resolution: sensitive touch

The colour CCD chip ensures users can see more and, as a result, measurements can be carried out with great precision and sensitivity, providing detection of even very weak signals. The camera also offers three frame rates:

Search mode uses 3x pixel binning to offer nearly 35 images per second at 688 x 514 pixels. This makes finding suitable areas of a sample very easy. The focus mode uses 2x pixel binning to offer 14 images per second at 1,040 x 772 pixels. This ensures that focusing can be carried out quickly and accurately.

The full-resolution mode offers 5 images per second at 3.2-megapixel resolution. These modes enable users to quickly find, focus on and image exactly what they are looking for with good colour fidelity. Additionally, the UC30 offers a broad exposure range (100 μ s–10 s) and a black-and-white acquisition mode at 1,040 x 772 pixels.

Easy installation

The UC30 can be quickly and easily mounted onto all light microscopes with a C-mount adaptor. Furthermore, FireWire™ technology guarantees that installation onto a PC or laptop equipped with a FireWire™ port is simple, rapid and flexible, with power and data all from one cable.

Clear controls

The UC30 can be fully operated via the Olympus imaging software families cell* and Stream. This ensures that it can be used to its maximum capacity very easily and enables innovative solutions to all challenges, including image commenting, archiving, report generation and emailing.

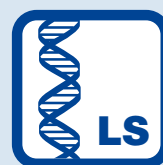
A UC30

Routine excellence



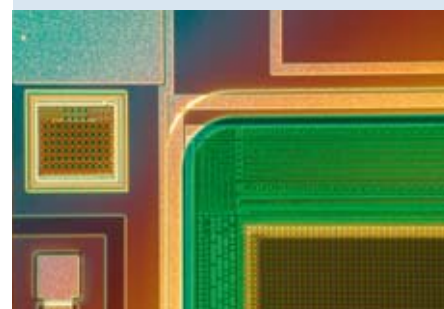
B High-resolution camera

For life and materials science



C Olympus True Colour

OTC colour management



Detail of CCD chip in polarised light

A XC30

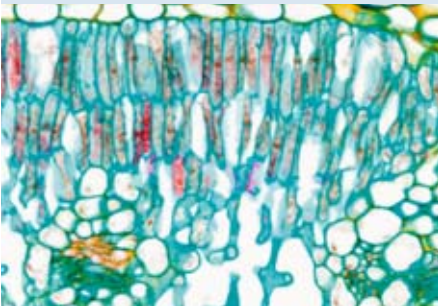
3-megapixel cooled camera head

**B** Peltier-cooled camera

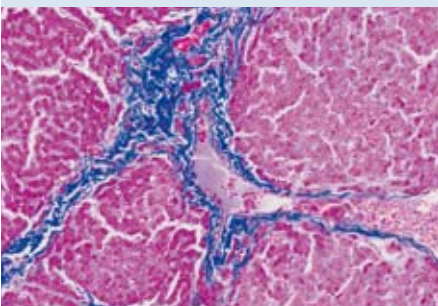
For life science

**C** Olympus True Colour

OTC colour management



Oleander leaf section



Liver section, malign

XC30

The Olympus XC30 is similar to the UC30 but has the powerful benefits of Peltier cooling and partial readout technology. As a result of the cooling, the performance of the XC30 is perfectly balanced in terms of background noise and colour fidelity. This is especially relevant to pathology and histology applications. The versatile CCD can also be used for high-intensity fluorescence.

Keeping a cool head

The Peltier cooling mechanism maintains the CCD chip at a constant 10 °C (at 25 °C ambient temperature) to guarantee perfect colour images that are rich in contrast, with excellent colour fidelity and extremely low background noise. The cooling also enables the exposure range to be expanded to cover 100 µs–160 s.

Versatile functionality

The 2,080 x 1,544-pixel CCD chip offers 14 bits per colour channel and can be switched between various frame rates for easier use. As well as the 2x and 3x pixel binning capabilities, the XC30 also offers a partial readout mode where a segment of the entire field of view can be defined by the user and only this image segment is read out by the camera. This enables faster focusing on and imaging of the features of interest within the field of view.

Consistent control

As with the UC30, the XC30 can be fully operated using the *cell** and Stream families of imaging software. This makes it both easy and quick to use it to its maximum capacity, ensuring that it provides the best solution to all challenges including image labelling, commenting and archiving, report generation and emailing.

Image C on the right shows crystalline structures in polarisation microscopy

XC50

The Olympus XC50 offers a high resolution of 5 megapixels and is Peltier-cooled to provide a wide dynamic range along with a number of different frame rates using pixel binning and partial readout modes. These make the XC50 a versatile colour camera with excellent sensitivity and flexible operation.

The chip

The 2,576 x 1,932-pixel CCD chip used in the XC50 offers 14 bits per colour channel and can be used for variable exposure times between 100 μ s and 160 s with the help of Peltier cooling, which maintains a constant 10 °C (at 25 °C ambient temperature). These features, along with the high sensitivity, colour fidelity, superior contrast and extraordinary signal-to-noise ratio make the XC50 a great universal high-resolution colour camera.

In the frame

The XC50 supports three different binning modes: 2x, 4x and 6x, as well as a partial readout mode which is used to concentrate and retrieve the information from a region of interest (ROI) within an image. At full resolution, the XC50 provides a live frame rate of 5 fps, which increases to 24.5 fps using the 6x binning mode.

Installation and control

Using the standard C-mount adaptor and FireWire™ connectivity, the XC50 is easy to integrate into any system and ensures a tidy working space. Furthermore, the camera can be fully operated using the cell* and Stream software families, which also offer a host of image processing, storage and measurement functions. In addition, the software uses real-time functions to ensure that the entire dynamic range is exploited, for optimally balanced contrast and superior image quality.

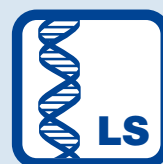
A XC50

High-resolution camera



B Peltier-cooled camera

For life and materials science



C Olympus True Colour

OTC colour management

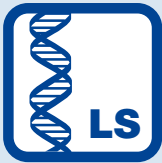


A DP25

Colour performance camera

**B** Versatile camera

For life and materials science

**C** Authentic colours

Internal colour management

**D** Nut weevil (*Curculio nucum*)

Image acquired with EFI (extended focal imaging)



SMD-welded circuit board

DP25

The DP25 5-megapixel colour digital microscopy camera takes imaging to the next level through the integration of superior technologies, such as ICC profiles for colour fidelity and field update algorithms for fast frame rates. As a result, the Olympus DP25 is an easy-to-operate digital colour camera system for a broad range of microscopy and imaging processes such as image documentation, reporting and analysis.

The power to perform

The CCD chip has a maximum resolution of 2,560 x 1,920 pixels and, with three binning levels (2x, 3x and 4x), can be used in live mode with various frame rates from 8 fps (full resolution) to 32 fps (4x binning), ensuring the correct balance between frame rate and display quality for each and every application.

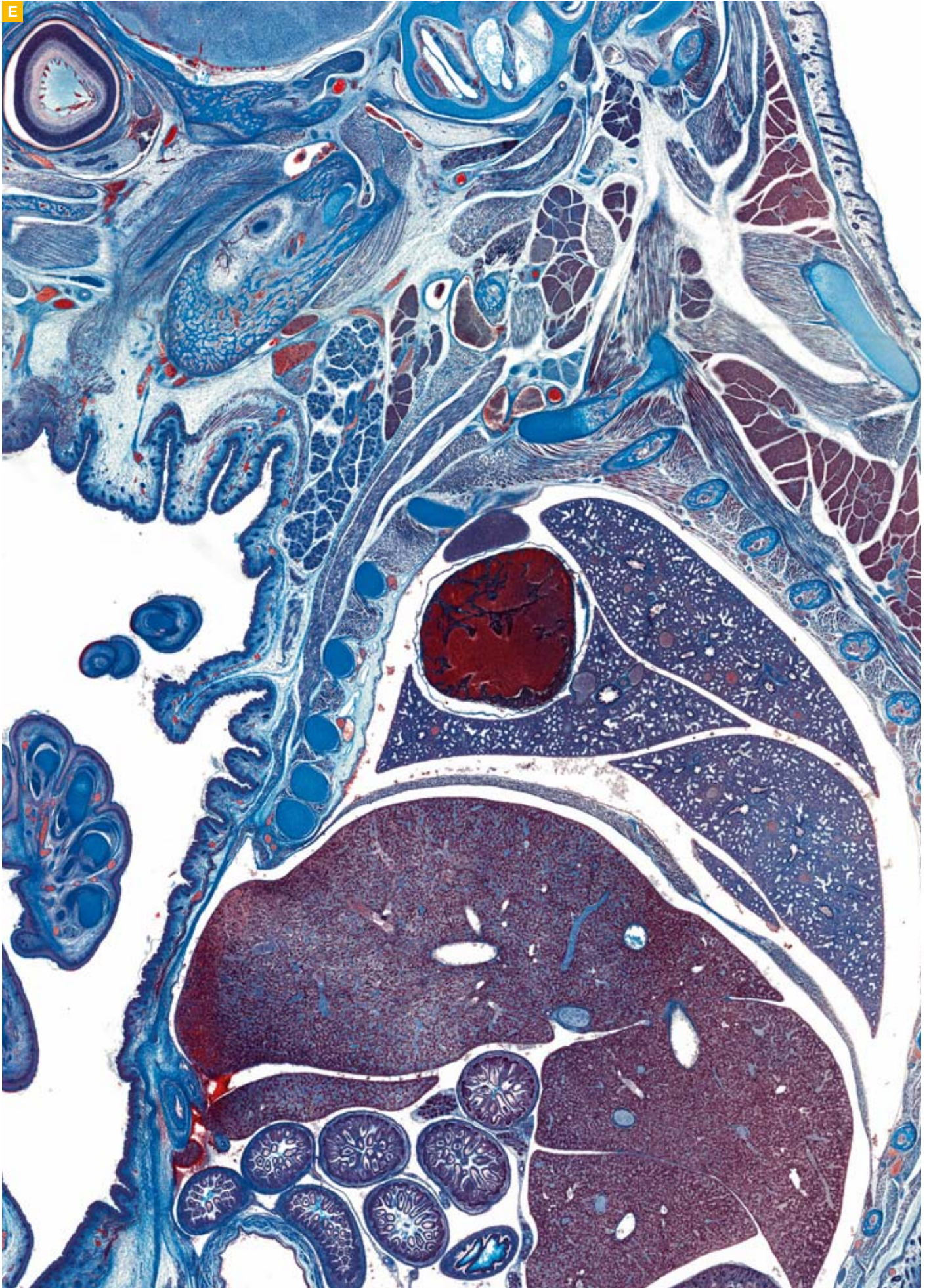
The quality to capture

The extensive dynamic range of the DP25 ensures that all images are of outstanding quality. This is supported strongly by the application of real-time true colour optimisation. As a result, images look natural, with very high fidelity to the actual colours in the sample.

The experience to enable

The DP25 draws on Olympus' extensive experience to provide intuitive installation and set-up. It uses the standard C-mount optical coupling for easy installation to all microscopes, and data transfer and power are provided by FireWire™ technology, guaranteeing that the DP25 is simple to install. Using the camera is just as simple, since there is a choice of either automatic exposure routines or manual control, and all acquired images are calibrated automatically. In addition, images can be prepared as desired with post-acquisition geometry, enhancement and filtering functions. Furthermore, the DP25 is seamlessly integrated into the extensive cell* and Stream software families from Olympus.

Image E shows a sagittal section of a rat embryo

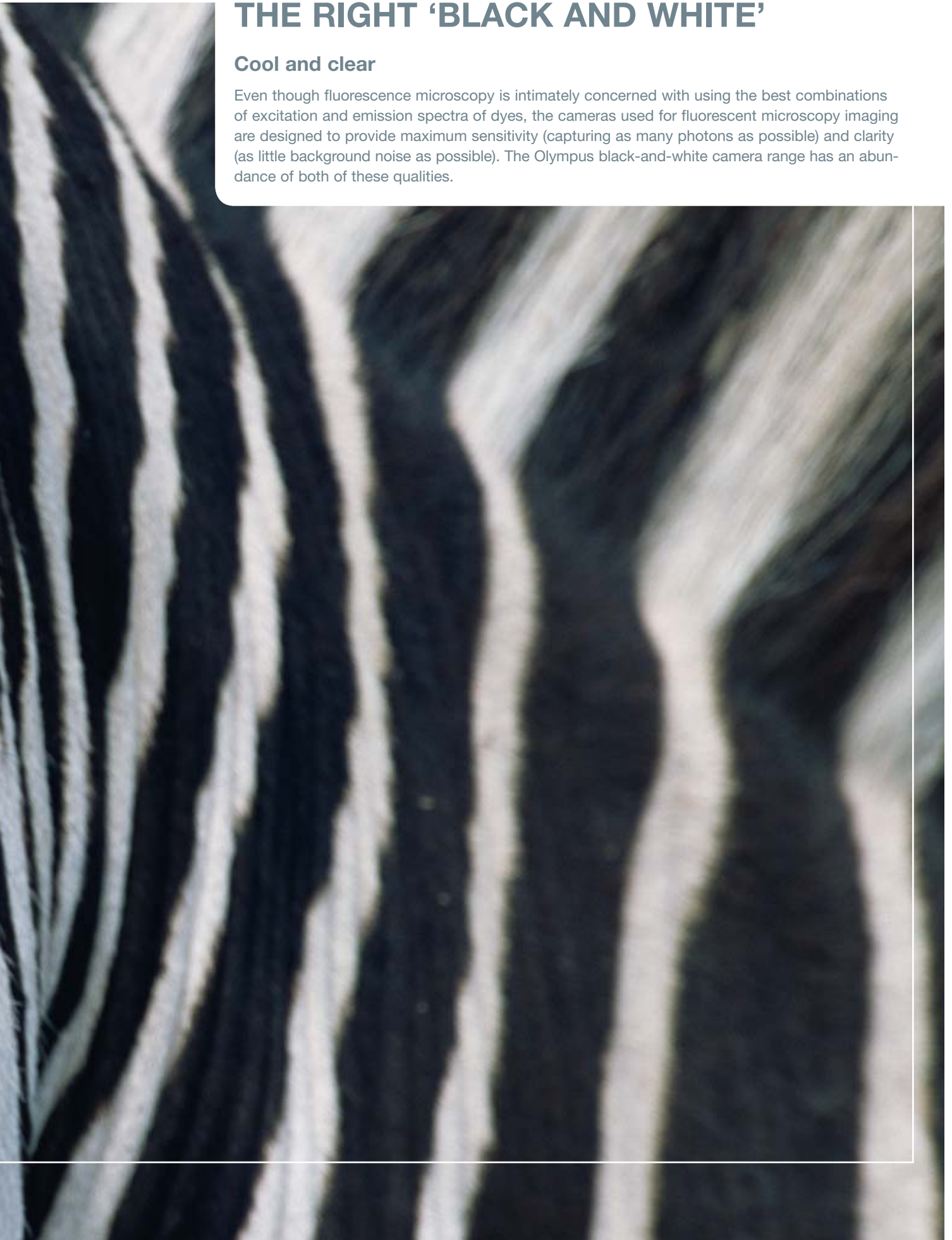




THE RIGHT 'BLACK AND WHITE'

Cool and clear

Even though fluorescence microscopy is intimately concerned with using the best combinations of excitation and emission spectra of dyes, the cameras used for fluorescent microscopy imaging are designed to provide maximum sensitivity (capturing as many photons as possible) and clarity (as little background noise as possible). The Olympus black-and-white camera range has an abundance of both of these qualities.

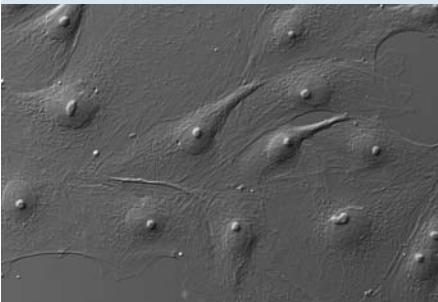
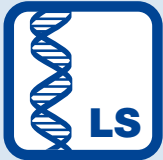


A XM10

Monochrome cooled CCD

**B Sensitive black-and-white**

For life science



PtK cells, differential interference contrast

XM10

The XM10 offers all of the properties required to provide dependable fluorescence microscopy images: high resolution, extremely high sensitivity, a cooled CCD chip, variable resolutions and an optional external trigger function.

The right tool for the job

The XM10 uses a 1,376 x 1,032-pixel CCD chip cooled to 10 °C (at 25 °C ambient temperature) with a 14 bit dynamic range and 15 fps at full resolution. It offers three binning modes: 2x, 4x and 8x, resulting in increased sensitivity and excellent frame rates in live mode, which make it easier to focus and locate areas of interest within the viewfield while conserving highly sensitive fluorescence samples:

- 25 fps at 688 x 516 pixels (2x binning)
- 50 fps at 344 x 258 pixels (4x binning)
- 80 fps at 172 x 129 pixels (8x binning)

Four models

The XM10 is available in four different versions to reflect its key capabilities. Amplifying the basic XM10, the IR-extended version (XM10-IR) is perfect for the full range of fluorescent dyes, including those in the near-IR region such as CY5 and CY7. The external hardware-triggered XM10-T version provides the capability for the user to capture images precisely when they want to via *cell*[™] or *cell*[®]. The XM10-TIR combines these two properties to offer users the perfect camera for all levels of fluorescence microscopy.

Easy to integrate

The Olympus XM10 makes a great addition to any microscopy system not only because of its great features, but also since it is easy to integrate, using a standard C-mount adaptor to connect to the microscope, and the high-speed data transfer and power capabilities of the FireWire™ interface.

The XM10 is fully supported by the Olympus *cell*^{*} and Stream software families, ensuring that whatever the application, the information is not only fully collected but properly analysed, processed and displayed.

Real-time image optimisation functions enable the utilisation of the entire dynamic range under all conditions and guarantee the best contrast. The XM10's integration into analysis functions provides all the capabilities and advantages of state-of-the-art digital image processing and analysis, ranging from image labelling, archiving, report generation and emailing, as well as photo-realistic printouts without the darkroom.

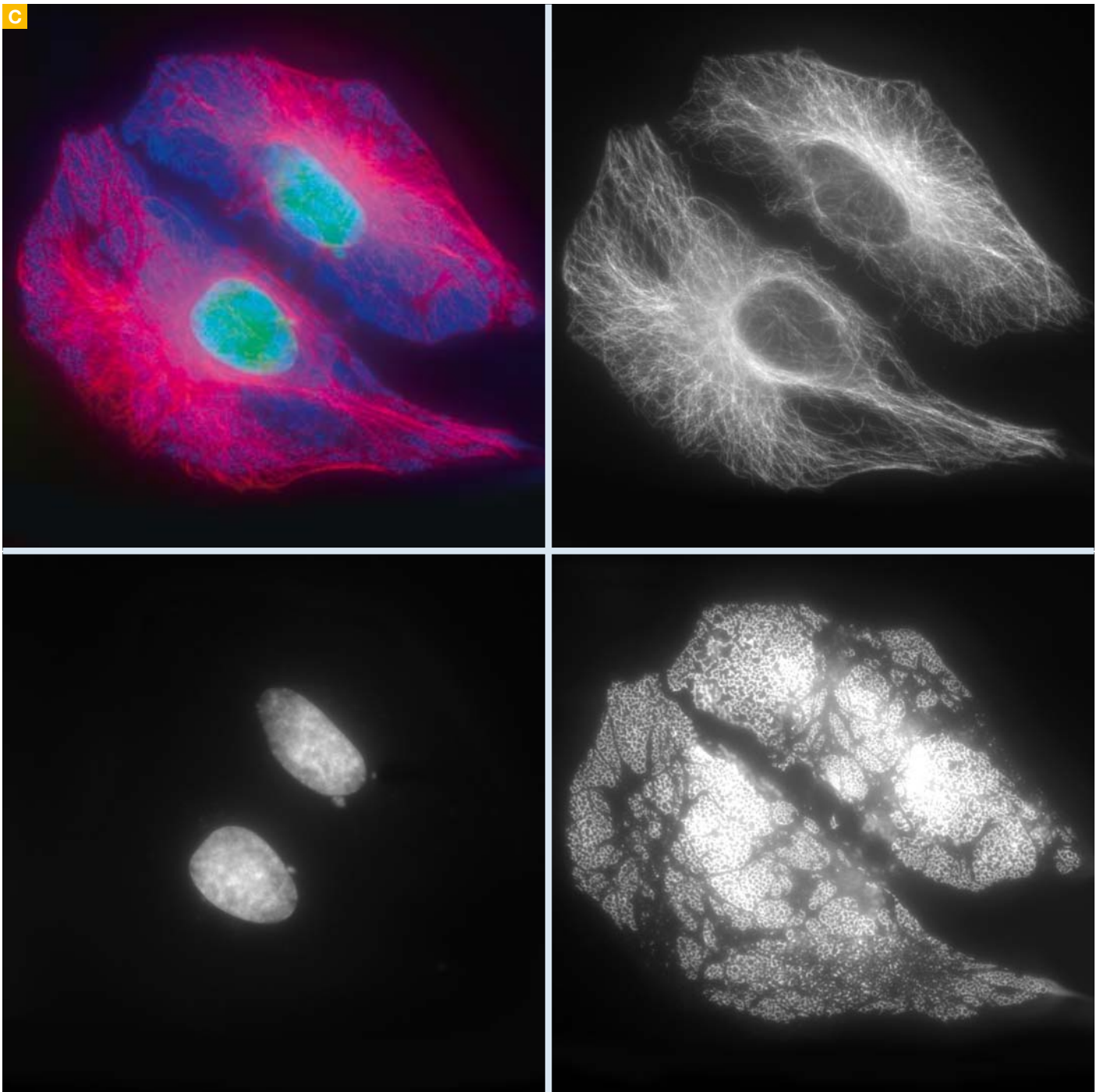
Designed for fluorescence

At full resolution, the XM10 is ideal for all fluorescence acquisitions since it is extremely sensitive, low in electronic noise and supports long integration times of up to 160 seconds. The chip has a pixel size of $6.45\ \mu\text{m} \times 6.45\ \mu\text{m}$, which, in combination with the camera cooling, ensures that the XM10 is ideal for recording even the faintest fluorescence signals in your specimen.

C Human HeLa cells

Red: alpha-tubulin subunit of microtubule cytoskeleton, green: nuclear DNA stained with Hoechst 33342, blue: GFP-tagged synaptotagmin-III, clustered in patches on the cell surface

Image courtesy of Dr Jeremy C. Simpson, Cell Biology & Biophysics, EMBL, Heidelberg, Germany





MULTI-TALENTED ALL-ROUNDERS

Trendsetters

When there is a requirement for two or more seemingly distinct technologies in one instrument, there is often a compromise reached whereby the product is good but not great. The Olympus universal microscopy imaging cameras reverse this trend, though, with two multi-talented cameras which excel at every task.

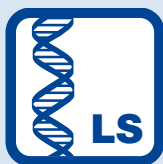


A DP72

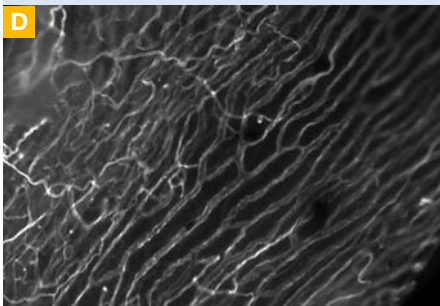
Multi-purpose camera

**B** High-performance camera

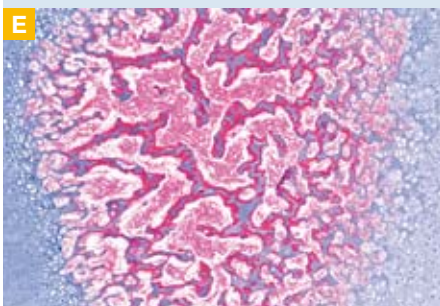
For life and materials science

**C** Authentic colours

Internal colour management



Axon and dendrite morphogenesis during neuronal maturation task*



Spinal column section

DP72

The new Olympus DP72 digital camera offers unmatched versatility for microscopists, combining a 12.8-megapixel resolution with the highest sensitivity, very fast image acquisition rates and colour match performance. These unique features mean that the DP72 now unites unrivalled performance in brightfield and fluorescence imaging in one camera.

Latest technology

The new Olympus DP72 digital camera uses the latest interface technology and a high-sensitivity CCD to provide the fastest image acquisition rates of any comparable camera. In live mode, full-frame images (1,360 x 1,024 pixels) can be viewed at 15 frames per second, making it ideal for viewing, discussion and documentation. A real-time frame-averaging function minimises noise and optimises the display, resulting in low-noise live images. Still images, at pin-point resolutions of up to 12.8 million pixels, can be obtained in less than 2.5 seconds with Olympus' unique piezo-shift technology.

Faithful colours

With superior hardware-driven image processing capabilities, the DP72 is especially suitable for applications such as pathology, where faithful colour reproduction is essential. Images are captured in 12-bit resolution using CCD technology to present authentic, smoothly graduated colours.

Sensitive B&W

In applications such as fluorescence microscopy, where a specimen is wholly or partially dark, the DP72 records black-and-white images with exceptional sensitivity. The custom monochrome mode allows the user to optimise the recording sensitivity according to the emission wavelength of the fluorescent dye in the specimen. High sensitivity and low noise is ensured for the faintest of images by Peltier cooling of the CCD chip to 10 °C below ambient temperature, allowing long exposure times. These features ensure that the Olympus DP72 gives sharp, clear results with even the faintest of fluorescent signals.

System integration

The DP72 is so advanced that it comes with its own PC control board, which enables all of the functions to be completed 'off-chip' but also without using precious computer CPU resources. The DP72 can be fully controlled via the `cell`* and Stream software families, which also offer enhanced image acquisition, archiving, analysis and distribution.

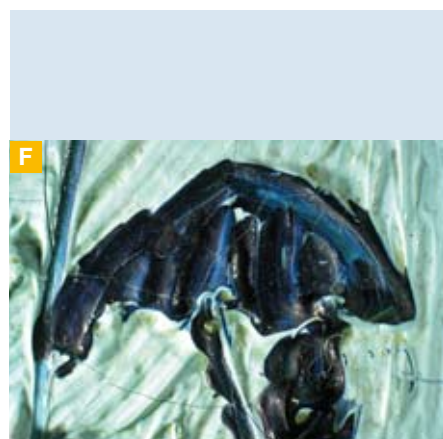
* Image D courtesy of Josh Morgan, Dr Rachel Wong group, Department of Anatomy and Neurobiology, Washington University, School of Medicine, St Louis, United States



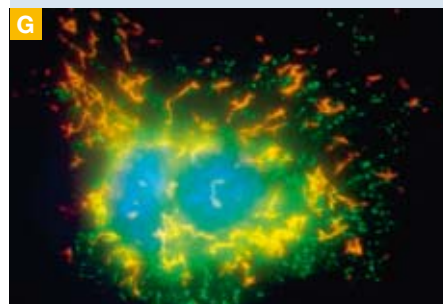
The difference

The DP72 is the best choice for all researchers, since it can be set to provide accurate automatic exposure for both fluorescent and brightfield specimens: the SFL Auto Exposure Mode makes it easy to acquire fluorescence images, since it correctly adjusts to the ideal exposure time automatically. It is also possible to set the parameters manually. Furthermore, images can be acquired in greyscale whilst maintaining the dynamic range of each RGB colour channel. Using this feature increases the sensitivity of the camera and, as a result, the exposure times can be shortened to limit cell damage.

The custom monochrome function allows the user to maximise the readout intensity of specific dyes by accentuating the respective pixel colour. Sensitivity can be increased by implementing binning modes, which combine the light intensity of 2 x 2 or 4 x 4 pixel areas. As a result, clear, sharp images are produced consistently for all illumination methods and experimental protocols.



Vincent van Gogh, 'Drawbridge' (1888), oil on canvas; detail showing brushstrokes*



1806b, human HeLa cells.**

* Image F courtesy of Wallraf-Richartz-Museum – Fondation Corboud, Cologne, Germany

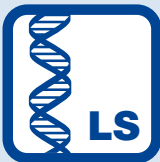
** Image G courtesy of Dr Jeremy C. Simpson, European Molecular Biology Laboratory (EMBL), Cell Biology and Biophysics Programme, Heidelberg, Germany

A XC10

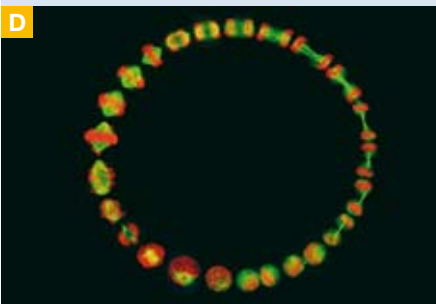
Sensitive, cooled CCD

**B Flexible universal camera**

For life and materials science

**C Olympus True Colour**

OTC colour management

**D**

Sequentially recorded cell cycle

XC10

With excellent image quality, high sensitivity and long integration times, the Olympus XC10 Peltier-cooled colour camera offers every user a flexible general-purpose imaging set-up.

Fast, smooth and sensitive

The powerful 1,376 x 1,038-pixel CCD chip offers the clarity of 14 bits per colour channel and has the ability to provide very high frame rates via the use of pixel binning. In the 2x binning mode, the camera provides more than 25 fps, which increases to nearly 50 fps when using 4x binning. This makes the XC10 ideal for applications that require fast image acquisition of dynamic objects. In addition, the high image frequency can be used to focus on samples or locate areas of interest directly on the PC screen.

The high sensitivity of the XC10 is the result of a large pixel size of 6.45 x 6.45 μm . This defines the camera's ability to be a well-equipped all-rounder; not only perfect for colour imaging, but also for meeting high expectations in sensitive fluorescence applications.

Chilled

The Peltier-cooled CCD maintains a temperature of 10°C (at 25°C ambient temperature), enabling this multifunctional camera to provide colour and black-and-white images that are rich in detail and contrast, with extraordinarily low background noise. The extensive exposure time range (100 μs –160 s) also adds to the XC10's appeal, ensuring that both strong and weak signals are captured with equal fidelity.

A team player

Whatever the application, the XC10 can provide the images that enable research to be pushed forward. With the ease of both C-mount optical coupling and FireWire™ data and power connectivity, integrating the XC10 into your imaging system is easy.

STAYING IN THE SHADE: COLOUR MANAGEMENT

Colour is an extremely important parameter to consider when choosing a microscope imaging system. In microscope imaging, there are many different ways of electronically interpreting colour and various pieces of equipment that are used to transfer or process the image. As a result, being sure that the final version of the image is a true representation of what was actually there in the original sample, was previously a hit or miss procedure. Olympus has changed this by incorporating Olympus True Colour (OTC) technology across its new colour microscope imaging camera range, the UC and XC series. OTC ensures that there is the same colour distribution in the sample, live image and recorded image, enabling the 'real image' to be viewed at every stage.

The importance of colour

Colour is one of the main methods of differentiating the relevant aspects of a sample. The colours in the sample could be natural or imposed by the research protocol, and the overall balance of the colours is often used to determine certain properties or even diagnose disease. Therefore it is essential that, as well as ensuring the optimum resolution and clarity, colours are captured with the right hue, saturation and intensity as seen through the eyepiece by the user.

Highest fidelity

The unique Olympus True Colour (OTC) system ensures consistency between input and output colours, as well as between different cameras. OTC uses International Color Consortium (ICC) reference profiles to govern the relationship between the colours at every stage of the imaging process. This ensures true colour fidelity from the specimen to the monitor for every protocol on any new Olympus colour microscope camera.

Real-time: real colour

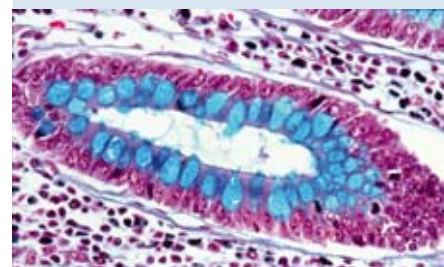
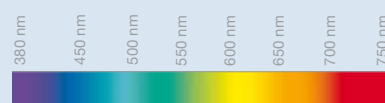
The Olympus True Colour system also works in real time, applying the profiles in live mode to ensure the best possible colour representation at the highest possible speed (patents pending). As a result, the user can capture the image they require directly from live mode, without worrying about the quality of the colours.

Colour profiles

Different components in an imaging system "work" in different "colour spaces", e.g. cameras and computer displays. The International Color Consortium has defined comprehensive profiles to describe each "colour space", also known as "colour gamuts". Each component of the imaging system that has an influence on colour can therefore be described by an "ICC profile". The resulting set of profiles is used to achieve optimum colour reproducibility for the imaging system based on human perception. This method is often called "gamut mapping" and is carried out by a "colour management module" included in the software that drives the Olympus colour cameras. This ensures that there is an excellent level of consistency between different components of the same system and also between different cameras in the range.

A Human vision

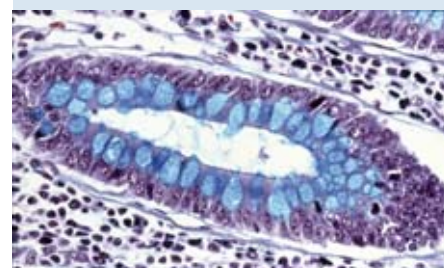
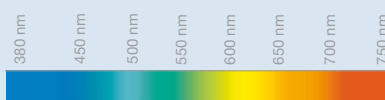
"Optical spectrum" 380–750 nm



Typical specimen as seen through human eyes on an Olympus microscope

B Camera vision

"Optical spectrum" 380–750 nm

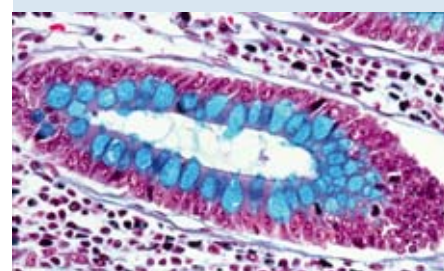
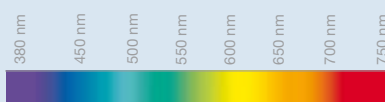


The same specimen "seen" by the CCD sensor of a digital camera

OTC

C Your display

"Optical spectrum" 380–750 nm



Monitor display of the image (image taken by an Olympus CCD camera, after the application of the OTC algorithm)

Camera specifications

Colour cameras

	DP21	SC30	UC30	XC30	XC50	DP25
Image sensor	Colour CCD	Colour CMOS	Colour CCD	Colour CCD	Colour CCD	Colour CCD
Sensor type	Sony ICX 274 AQ	MT9T001P12STC	Sony ICX 252 AQ	Sony ICX 252 AQ	Sony ICX 282 AQ	Sony ICX 282 AQF
Sensor size	1/1.8 inches	1/2 inches (4:3)	1/1.8 inches	1/1.8 inches	2/3 inches	2/3 inches
Resolution (max.)	1,600 x 1,200 pixels	2,048 x 1,532 pixels	2,080 x 1,544 pixels	2,080 x 1,544 pixels	2,576 x 1,932 pixels	2,560 x 1,920 pixels
Pixel size	4.2 µm x 4.2 µm	3.2 µm x 3.2 µm	3.45 µm x 3.45 µm	3.45 µm x 3.45 µm	3.4 µm x 3.4 µm	3.4 µm x 3.4 µm
Binning	No	2x, 3x, 4x	2x, 3x	2x, 3x	2x, 4x, 6x	2x, 3x, 4x
Readout speed	n/a	5 MHz–40 MHz	24.5 MHz	24.5 MHz	24.5 MHz	24.5 MHz
ADC*	10 bit	10 bit	14 bit	14 bit	14 bit	12 bit
Exposure time	0.05 ms–8 s	0.06 ms–1.75 s	0.1 ms–10 s	0.1 ms–160 s	0.1 ms–160 s	0.2 ms–16 s
Live frame rates**	15 fps at 1,600 x 1,200 27 fps at 800 x 600	10 fps at 2,048 x 1,532 28 fps at 1,024 x 768 37 fps at 680 x 512 49 fps at 508 x 384	7.0 fps at 2,080 x 1,544 13.6 fps at 1,040 x 772	7.0 fps at 2,080 x 1,544 13.6 fps at 1,040 x 772	4.5 fps at 2,576 x 1,932 9 fps at 1,288 x 966 16.5 fps at 640 x 480 24.5 fps at 424 x 318	8 fps at 2,560 x 1,920 8 fps at 1,280 x 960 24 fps at 854 x 640 32 fps at 640 x 480
Cooling system	No	No	No	Peltier 10 °C at 25 °C ambient	Peltier 10 °C at 25 °C ambient	No
Readout noise	n/a	n/a	<10 e ⁻	<10 e ⁻	<10 e ⁻	<10 e ⁻
External trigger	No	No	No	No	No	No
Data transfer	USB 2.0	USB 2.0	FireWire™ IEEE 1394a	FireWire™ IEEE 1394a	FireWire™ IEEE 1394a	FireWire™ IEEE 1394a
OTC support**	No	Yes	Yes	Yes	Yes	No
Partial readout	No	No	Yes	Yes	Yes	Yes
Remarks	For standalone use available with control panel and USB storage media. Connectable to LAN.	–	–	–	–	Field update technology
Operating system	Windows 2000/XP	MS Windows XP Professional (recommended), MS Windows Vista 32	Windows XP/Vista	Windows XP/Vista	Windows XP/Vista	Windows XP SP2/Vista
Application						

Black-and-white camera

	XM10
Image sensor	Monochrome CCD
Sensor type	Sony ICX 285 AL
Sensor size	2/3 inches
Resolution (max.)	1,376 x 1,032 pixels
Pixel size	6.45 µm x 6.45 µm
Binning	2x, 4x, 8x
Readout speed	24.5 MHz
ADC*	14 bit
Exposure time	0.1 ms–160 s
Live frame rates**	15.0 fps at 1,376 x 1,032 25 fps at 688 x 516 50 fps at 344 x 258 80 fps at 172 x 129
Cooling system	Peltier 10 °C at 25 °C ambient
Readout noise	<10 e ⁻
External trigger	Optional
Data transfer	FireWire™ IEEE 1394a
OTC support**	No
Partial readout	Yes
Remarks	–
Operating system	Windows XP/Vista
Application	

Universal cameras

	DP72	XC10
Image sensor	Colour CCD	Colour CCD
Sensor type	Sony ICX 275 AQ	Sony ICX 285 AQ
Sensor size	2/3 inches	2/3 inches
Resolution (max.)	4,140 x 3,096 pixels (1.45 Mpx w. pixel shift)	1,376 x 1,032 pixels
Pixel size	6.45 µm x 6.45 µm	6.45 µm x 6.45 µm
Binning	2x, 4x	2x, 4x
Readout speed	28 MHz	24.5 MHz
ADC*	12 bit	14 bit
Exposure time	23 µs–60 s	0.1 ms–160 s
Live frame rates**	15 fps at 1,360 x 1,024 15 fps at 680 x 512 29 fps at 680 x 510 57 fps at 340 x 250	15 fps at 1,360 x 1,024 25 fps at 688 x 516 50 fps at 344 x 258 pixels
Cooling system	Peltier 10 °C at 25 °C ambient	Peltier 10 °C at 25 °C ambient
Readout noise	n/a	<10 e ⁻
External trigger	Yes (with cell^M/R)	Optional
Data transfer	PCI Express Rev 1.0a or later	FireWire™ IEEE 1394a
OTC support**	No	Yes
Partial readout	No	Yes
Remarks	Optional custom monochrome mode, IR filter optionally removable	–
Operating system	Windows XP SP2/Windows Vista Business	Windows XP/Vista
Application		

* Analogue digital conversion. Actual bit depth of the camera depends on software used.

** Conditions for performance measurement: SC30: AMD Phenom II X4 2.8 GHz. All other cameras: Dual Athlon AMD 2.6 GHz with ICC profiles at 1 ms exposure time. Live frame rates depends on software program used.

** Olympus True Colour optimisation algorithm

The manufacturer reserves the right to make technical changes without prior notice.

www.olympus-europa.com

OLYMPUS

OLYMPUS EUROPA HOLDING GMBH

Postfach 10 49 08, D-20034 Hamburg, Germany
Wendenstraße 14–18, D-20097 Hamburg, Germany
Phone: +49 40 23773-0, Fax: +49 40 23773-4784
E-mail: microscopy@olympus-europa.com